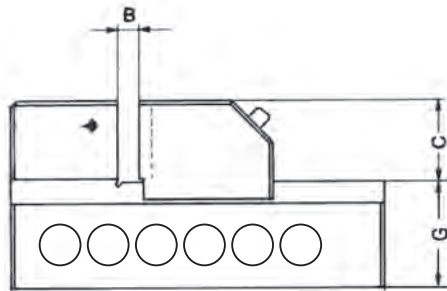


# Grinding and inspection vices



### APPLICATION

Mainly in tool construction on grinding, milling and engraving machines, on jig boring machines, for measuring and control work and for production operations requiring high clamping precision.

### CUSTOMER BENEFITS

- ⊕ Easy clamping and unclamping with allen key
- ⊕ Clamping jaw adjustable in stages, snaps in automatically

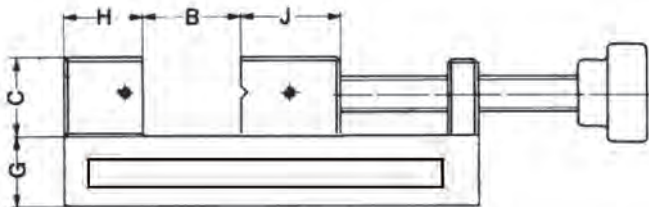
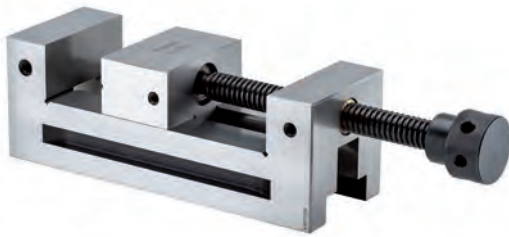
### TECHNICAL FEATURES

- With draw-down effect
- Made of alloyed tool steel, hardened and very finely ground
- Horizontally and vertically ground prism
- No spindle which could cause contamination during electric discharge machining, for example

A29  
PLF, with quick adjustment in gauge accuracy

| Item no. | Size | Squareness <sup>1)</sup> / 100 mm | Parallelism <sup>2)</sup> / 100 mm | Jaw width mm | B mm | Total height mm | C mm | G mm | Length body mm | Weight kg |
|----------|------|-----------------------------------|------------------------------------|--------------|------|-----------------|------|------|----------------|-----------|
| 1111185  | 0    | 0,005                             | 0,005                              | 50           | 65   | 50              | 25   | 25   | 140            | 1,4       |
| 1111186  | 1    | 0,005                             | 0,005                              | 73           | 100  | 67              | 35   | 32   | 190            | 4,1       |
| 1111187  | 2    | 0,005                             | 0,005                              | 100          | 125  | 90              | 45   | 45   | 245            | 7,3       |

- 1) Base to stationary jaw clamping surface  
2) Base to upper guide edge



### APPLICATION

Mainly in tool construction on grinding, milling and engraving machines, on jig boring machines, for measuring and control work and for production operations requiring high clamping precision.

### CUSTOMER BENEFITS

- ⊕ Clamping and unclamping with threaded spindle

### TECHNICAL FEATURES

- Horizontally and vertically ground prism
- Made of alloyed tool steel, hardened and very finely ground

A29  
PL-G

| Item no. | Size | Squareness <sup>1)</sup> / 100 mm | Parallelism <sup>2)</sup> / 100 mm | Jaw width mm | B mm | Total height mm | C mm | Length body mm | G mm | H mm | J mm | Weight kg |
|----------|------|-----------------------------------|------------------------------------|--------------|------|-----------------|------|----------------|------|------|------|-----------|
| 1111182  | 0    | 0,005                             | 0,002                              | 60           | 55   | 25              | 25   | 110            | 25   | 25   | 33   | 1,6       |
| 1111183  | 1    | 0,005                             | 0,002                              | 73           | 100  | 74              | 35   | 210            | 32   | 33   | 45   | 4         |
| 1111184  | 2    | 0,005                             | 0,002                              | 88           | 125  | 88              | 40   | 250            | 48   | 40   | 50   | 7,6       |

- 1) Base to stationary jaw clamping surface  
2) Base to upper guide edge